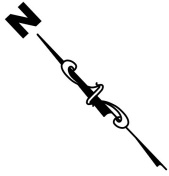
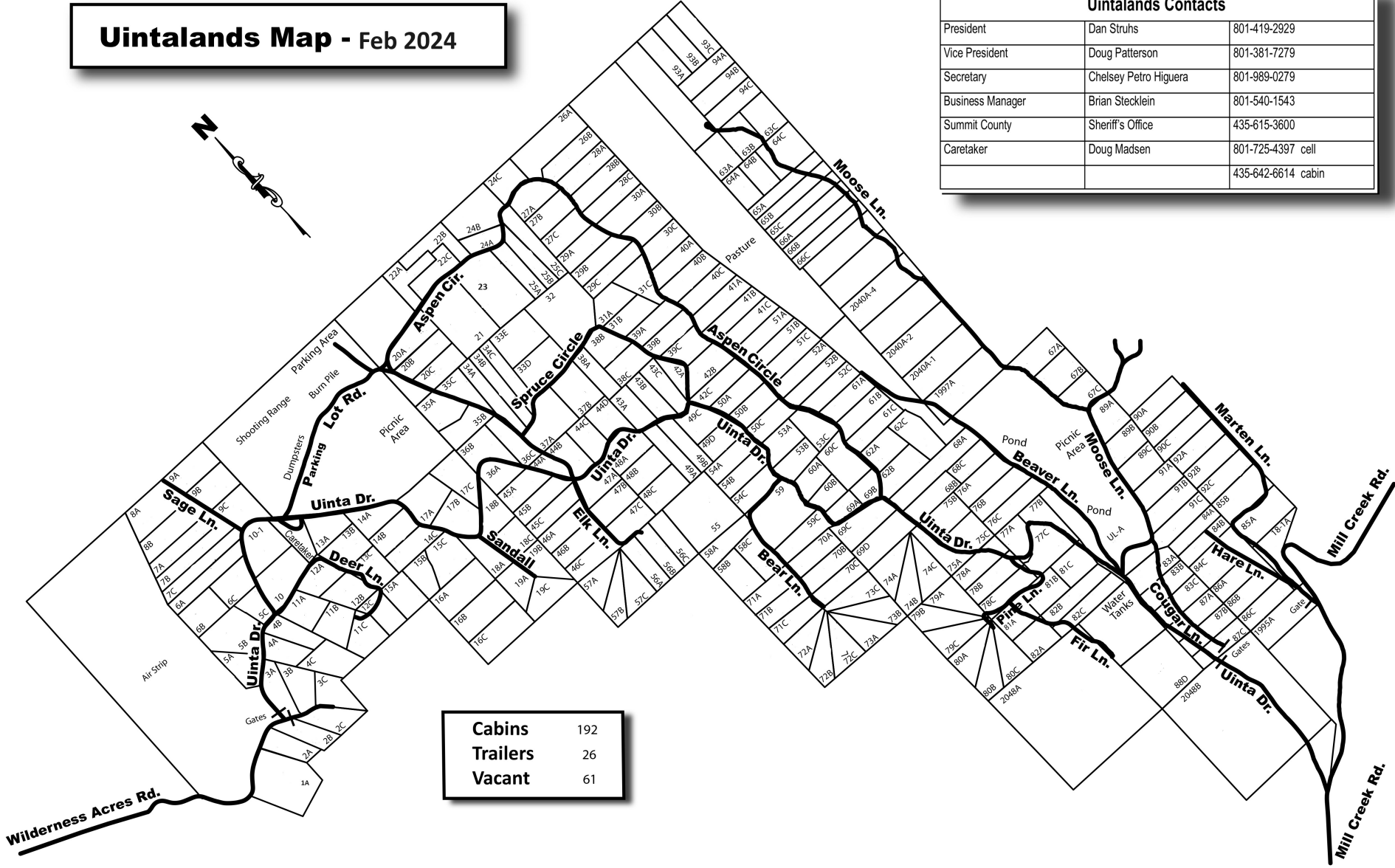


# Uintalands Map - Feb 2024



Uintalands Contacts		
President	Dan Struhs	801-419-2929
Vice President	Doug Patterson	801-381-7279
Secretary	Chelsey Petro Higuera	801-989-0279
Business Manager	Brian Stecklein	801-540-1543
Summit County	Sheriff's Office	435-615-3600
Caretaker	Doug Madsen	801-725-4397 cell
		435-642-6614 cabin



Cabins	192
Trailers	26
Vacant	61